

# CropTalk



## MPCI Underwriting

### In the Federal Register

A **Proposed Rule** regarding the “Florida Avocado Crop Insurance Provisions” was published May 20, 2009, proposing to convert this from a pilot to a regulatory program beginning with the 2011 crop year. Any comments are due to the PASD Director of RMA by July 20, 2009.

Of possible interest: A “**Notice of Intent to Seek Approval To Conduct an Information Collection**” was published [under RMA] May 4, 2009, regarding the development of risk management tools regarding “...producer risks associated with the employment of seasonal labor in Florida specialty

crops.” Any comments regarding the effect of this new information collection are due to Virginia Guzman at RMA by July 6, 2009. *(Chris Lindsay)*

### 2010 MPCl POLICIES

The following NCIS policy provisions are or will be made available:

- 2010-NCIS 810 Cabbage Crop Provisions [NCIS Bulletin No. 09026]. **NOTE:** The bulletin should have listed the Written Agreement Amendment as “not applicable” to the previous Cabbage Pilot policy since written agreements were not available when it was a pilot.
- 2010 Livestock Gross Margin (LGM) Basic Provisions and Com-

modity Exchange Endorsements for Cattle, Dairy Cattle, and Swine [pending possible minor corrections by RMA].

- 2010 Livestock Risk Protection (LRP) Basic Provisions [2010-NCIS 902] and Specific Coverage Endorsements for Feeder Cattle and Lamb [pending possible minor corrections by RMA]. *(Chris Lindsay)*



## Crop-Hail Underwriting

### Crop-Hail Forms

Several crop-hail slip cards were recently reprinted so as to have a supply on hand. Two of those slip cards reprinted include Stage of Development charts, which were revised to more accurately reflect the time interval between growth stages as stated in the crop loss instructions. In addition to that change, the **NCIS 6110 '09 Corn Stage of Development and Defoliation Loss Chart** slip card was revised to remove the

3/8” marking which used to be the length used to determine the first noticeably elongated internode (where the fifth leaf attaches), and the **NCIS 6009 '09 Small Grains Shatter Chart and Stage of Development Chart** was revised to add the number of days between stages as stated in the Wheat Loss Instructions. Note that the respective chart factors were not revised on either slip card. *(Loretta Sobba)*



8900 Indian Creek Parkway,  
Suite 600  
Overland Park, KS 66210-1567  
[www.ag-risk.org](http://www.ag-risk.org)

Laurie Langstraat, Editor

**Crop Insurance Keeps America Growing**  
Visit [www.cropinsuranceinamerica.com](http://www.cropinsuranceinamerica.com)

# Training

## NCIS CONFERENCES

The dates for the 2009 NCIS conferences are listed below. All conferences will be held at the Sheraton in Overland Park, Kan. A bulletin for each conference will be distributed 6-8 weeks prior and will continue registration information and a tentative agenda.

Be watching your mail and the NCIS website for more information.

- 2010 Fall Update Conference—July 21-22, 2009
  - 2010 Spring Update Conference—November 5-6, 2009
- (Laurence Crane)



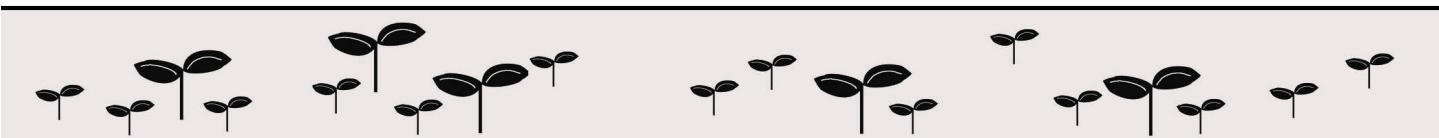
# Education

## Spanish Publication Now Available

A Spanish version of the *Guide to Agricultural Risk Management* is now available for order. This publication is identical to the English version but has been translated into Spanish.

The publication is available for \$1.00 each, plus shipping, and can be purchased by contacting Donna Bryan at 900-951-6247 or donnab@ag-risk.org.

(Laurie Langstraat)



# NCIS Bulletins

The following bulletins were issued 5/1 through 5/31. If you did not receive one and feel you should have, please contact Donna Bryan so we can send you a copy and update our mailing list.

BUL NO.	DATE	SERIES*	TYPE	TITLE	DISTRIBUTION
9025	5/01/09	1232	ML	2009 C-H & MPC I Small Grains & Soybean School— Columbia, MO	MO, CM, GS, IL/ WI, NE/KO/IA, SKL
9026	5/5/09	2253	MRF	2010-NCIS 810 Cabbage Crop Provisions	Members-MISC
9027	5/14/09	1156	SRI	Closing Dates for 2009 Crop-Hail Insurance Data	CM, IC
9028	5/15/09	1227	HL	Crop-Hail Slip Cards for Corn and Small Grains	CM, CLM
9029	5/18/09	1233	ML	MPCI & Crop-Hail Dry Peas, Lentils, Mustard, Safflower & Small Grains School—Moccasin, Mont.	SKL, CLM, CM, NW, CO, MT, ND, SD
9030	5/21/09	2254	MRF	Florida Avocado Proposed Rule for Comment	MM

\***HRF**-Hail Rates & Forms

**ML**-MPCI Loss Adjust.

**HL**-Hail Loss Adjust.

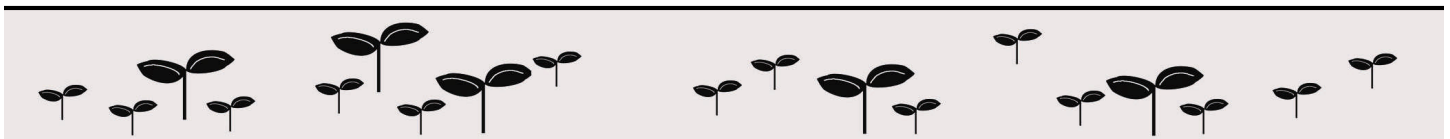
**DP**-Data Processing

**SRI**-Stat. Report Inst.

**MRF**-MPCI Rates & Forms

**MB**-Membership

**ET**-Education/Training



<i>2009 NCIS SCHOOL/FIELD DAY</i>	<i>LOCATION</i>	<i>DATE</i>
MPCI Cherries & Dry Peas School	Pasco, Wash.	June 2-3
C-H &MPCI Small Grains & Soybean	Columbia, MO	June 10-11
MPCI & C-H Dry Peas, Lentils, Mustard, Safflower & Small Grains	Moccasin, Mont.	June 23-24
TBD	Centerville, SD	July 14-15
2010 Fall Update Conference	Overland Park, Kan.	July 21-22
TBD	Lamberton, MN	July 22-23
TBD	Fargo, ND	July 27-29
Crop-Hail	Champaign, Ill.	August 4-5
Apple	Northeast Region	August 11
TBD	Dodge City, Kan.	August 18-19
Forage, Corn & Soybean	Madison, Wis.	September 1-2
Crop-Hail Cotton, Soybeans, Rice	Greenville, Miss.	September 2-3
2010 Spring Update Conference	Overland Park, Kan.	November 5-6