

06.21.18
Bulletin No: 18035
CH Loss Adjustment No: 1347

2018 NCIS Crop-Hail Corn and Soybean Workshop

In Conjunction With

Iowa State University

August 7-8, 2018
Ames/Boone, Iowa

Attendance At This School Is Limited To 100 Persons

Sponsored By:



National Crop Insurance Services

8900 Indian Creek Parkway, Suite 600
Overland Park, Kansas 66210
ph 800.951.6247

and

Iowa Regional/State Crop Insurance Committee



USCropInsurance



Crop
Insurance
InAmerica



NCISAmerica



CropInsurance
InAmerica



Crop-Hail Corn and Soybean Workshop

August 7-8, 2018
Ames/Boone, Iowa

Register On-Line @
www.aep.iastate.edu/hail/
By 07.27.18



Tuesday, August 7

- 8:00 AM **Registration Check-In, Refreshments**
- 8:30 **Welcome and Introductions** Warren Pierson, Extension Program Specialist and FEEL Coordinator, Iowa State University, Ames, IA – West Classroom
- 8:45 **Corn Growth and Development Factors to Consider: The Physiology Behind the Charts** Mark Licht, Assistant Professor, Agronomy and Extension Cropping Systems Specialist, Iowa State University, Ames, IA – West Classroom
- 9:45 **Soybean Growth, Development and Management Factors** Mark Licht, Assistant Professor, Agronomy and Extension Cropping Systems Specialist, Iowa State University, Ames, IA – West Classroom
- 10:45 **Break**
- 11:00 **Herbicide Injury Symptoms and Common Insect Crop Pests and the Damage They Cause** Bob Hartzler, Professor, Agronomy and Extension Weed Management Specialist, Iowa State University, Ames, IA; Erin Hodgson, Associate Professor, Entomology and Extension Entomologist, Iowa State University – West Classroom
- 12:00 PM **Lunch** (provided) West Classroom
- 12:45 **Corn Adjustment Procedures** Iowa Committee – East and West Classrooms - Split Into 3 Groups
- 1:45 **Break**
- 2:00 **Soybean Vegetative Stages Adjustment Procedures** Iowa Committee – East and West Classrooms - Split into 3 Groups
- 3:00 **Soybean Reproductive Stages Adjustment Procedures** Iowa Committee – East and West Classrooms - Split into 3 Groups

Wednesday, August 8

- 7:30 AM Morning Refreshments
- 8:00 Program Integrity - *NCIS*
- 8:30 Field Adjustment Exercises - Soybean
IA Committee Instructors
- 10:45 Break
- 11:00 Field Adjustment Exercises - Corn
IA Committee Instructors
- 12:30 PM Workshop Concludes

**The 2018 Corn and Soybean Hail Workshop is presented by Iowa State University
Extension and Outreach in cooperation with NCIS.**

National Crop Insurance Services has the right to publish, modify, display, reproduce, and copyright any photographs of attendees at this function on this date for any lawful purpose. This includes, but is not limited to, posting on the websites www.CropInsuranceInAmerica.com or www.Ag-Risk.org. As well as Facebook and YouTube. By attending this function you waive any right to approve final photographs and/or any uses of this photograph that may include your image. If you do not wish for NCIS to use your likeness in these ways, you should contact the NCIS staff liaison at this function OR call 800.951.6247.



Crop-Hail Corn and Soybean Workshop

August 7-8, 2018
Ames/Boone, Iowa

Register On-Line @
www.aep.iastate.edu/hail/
By 07.27.18



Objective

The objective of this school is to provide loss adjusters with corn and soybean crop hail instruction and field training. The field exercises provided at the test plots will incorporate adjusting hail damage in several different stages of corn and soybean development. This school is intended to benefit adjusters who have very little or no adjusting experience to adjusters who have medium or intermediate crop hail adjusting experience.

Material Needed

Participants must bring necessary NCIS corn and soybean crop hail slide cards, equipment, etc. Survey sheets and loss instructions will be provided.

Workshop Location

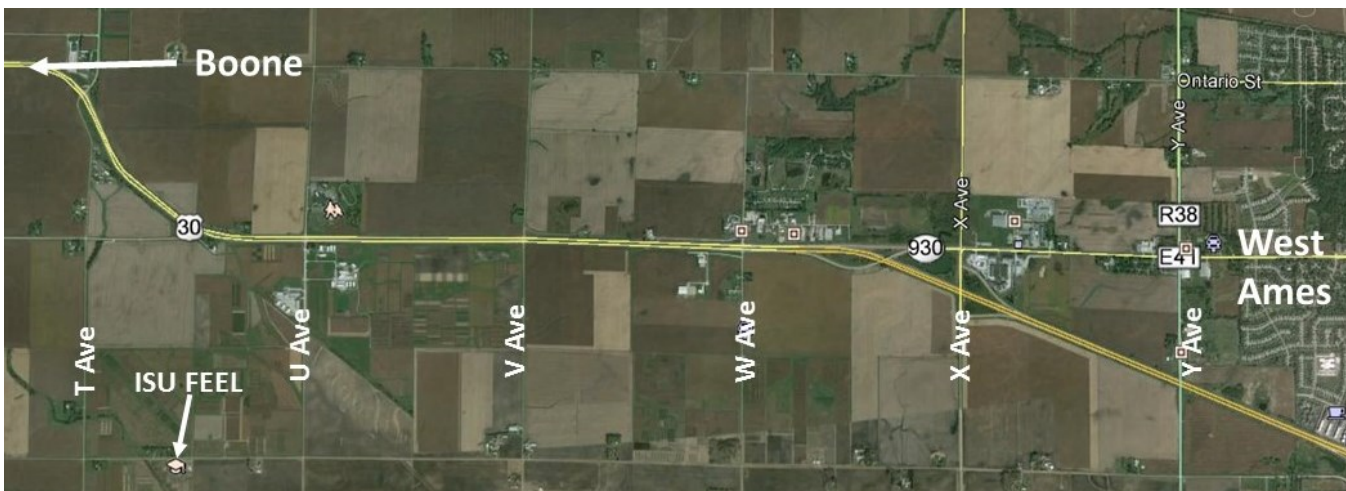
The Corn and Soybean Hail Workshop will be held at the Iowa State University Field Extension Education Laboratory (FEEL) located at 1928 240th St., Boone, IA (approx. 5 miles west of Ames). FEEL is a 43-acre demonstration and teaching facility that features modern classrooms, ample parking and a wide variety of crop management demonstrations.

From North or South Via I-35

I-35 to the Hwy 30 West exit. Proceed west on Hwy 30 for approximately 11 miles. At U Avenue, turn south. (United Community School is on the northeast corner and the ISU Agronomy Farm is on the southeast corner of this intersection.) Proceed south on U avenue for one mile then turn right on 240th street. Proceed west for 0.5 miles. FEEL is on the south side of the road.

From the West

Take Hwy 30 east of Boone for approximately 4 miles until the Hwy 17 South exit. Go south on Hwy 17 for 2.0 miles until you reach 240th street. Turn left and proceed east for 1.5 miles on 240th street. FEEL is on the south side of the road.



Additional Information

For questions regarding status of registration, cancellations, refunds, or receipts please contact IA State ANR Program Services at (515) 294-6429 or email anr@iastate.edu.

For questions about the program or FEEL, contact Warren Pierson, FEEL coordinator, at (515) 509-8308 or wperson@iastate.edu. Information is also available on the internet at <http://www.aep.iastate.edu/hail>

Hotel Information – There are numerous hotels in the Ames, IA area

Registration Information

The appropriate registration fee must be received **no later than July 27, 2018** to avoid the late fee. Space is limited so please register early. Registration after this date will be on a space availability basis and will be charged the late registration fee. **Final Registration closes Aug. 3, 2018.** Register online at www.aep.iastate.edu/hail/.

Early Fee	Late Fee
\$100.00	\$125.00

On-Line Registration
@
www.aep.iastate.edu/hail/



NCIS sponsored loss adjustment schools and field days are open to NCIS members and adjusters, RMA employees, and invited educators. Attendance by agents is not permitted.

If You Need Assistance
contact IA State Program
Services at (515) 294-6429

